

Trends on SGX Nifty indicate a Flat opening for the index in India with a 13 points gain. The Nifty futures were trading at 14,573 on the Singaporean Exchange

Asian markets will likely open mixed on Thursday after global equities dipped and U.S. investors considered which stock market sectors would most benefit from strengthening growth.

Australian S&P/ASX 200 futures lost 0.18% in early trading. Hong Kong's Hang Seng index futures lost 0.42%. Japan's Nikkei 225 futures rose 0.39%.

The S&P 500 closed lower on Wednesday, unable to halt the prior day's selloff, as investors set aside optimism about the economic recovery by Federal Reserve Chair Jerome Powell and Treasury Secretary Janet Yellen.

The Dow Jones Industrial Average fell 5 points, or 0.02 percent, to 32,418.15, the S&P 500 lost 21.37 points, or 0.55 percent, to 3,889.15 and the Nasdaq Composite dropped 265.81 points, or 2.01 percent, to 12,961.89

Oil prices skidded around 2% as fuel demand concerns re-emerged alongside fresh coronavirus pandemic lockdowns, trimming overnight gains spurred by the grounding of a giant container ship blocking crude shipments through the Suez Canal.

Brent crude futures slid \$1.14, or 1.8%, to \$63.27 a barrel at 0139 GMT, after jumping 6% overnight. U.S. West Texas Intermediate (WTI) crude futures dropped by \$1.27, or 2.1%, to \$59.91 a barrel, after climbing 5.9% overnight.

The Central Bureau of Investigation (CBI) has registered another case against promoters of DHFL (Dewan Housing Finance Ltd) for allegedly creating 2.60 lakh fake home loan accounts under the Pradhan Mantri Awas Yojana. The promoters fraudulently availed benefits under PMAY to the tune of Rs 14,046 crores. The apex investigation agency found that Rs 11,755.79 crores were diverted to accounts created in name of shell companies out of the Rs 14,046 crores.

DHFL had availed subsidy of Rs 1,887 crores under PMAY from the Center. The case registered by CBI is against promoters of DHFL Kapil Wadhawan and Dheeraj Wadhawan who are already facing two other cases by CBI in the Yes bank scam and UP power Corporation scam.

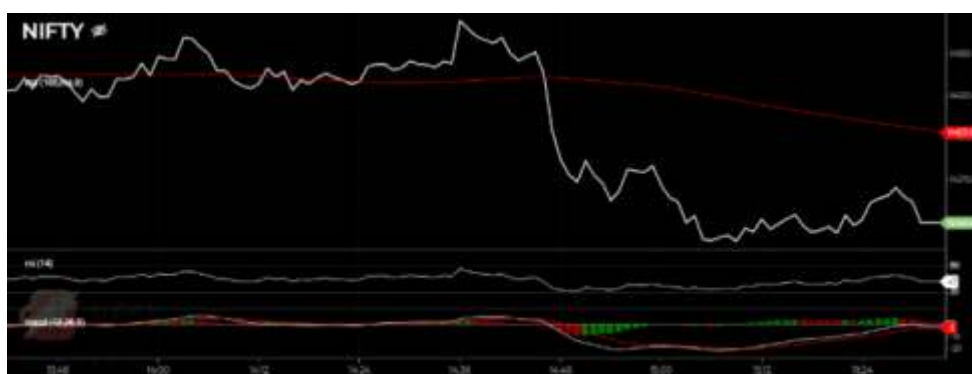
The case as per officials has been registered by CBI after a forensic audit report was submitted by auditing firm Grant Thornton which revealed irregularities by DHFL. The loans were mostly granted and processed in the name of economically weaker sections, low and middle income groups.

Markets regulator Sebi on March 24 ordered attachment of bank accounts as well as share and mutual fund holdings of Rana Kapoor, former MD and CEO of Yes Bank, to recover dues of over Rs 1 crore. The decision has been taken after Kapoor failed to pay the fine imposed on him.

Further, the Securities and Exchange Board of India (Sebi) issued a demand notice to Kapoor in February this year, although he did not pay any dues. The pending dues, totalling Rs 1.04 crore, include an initial fine of Rs 1 crore and an interest of Rs 4.56 lakh and a recovery cost of Rs 1,000, the attachment notice showed on Wednesday.

Vodafone Idea is under the F&O ban for March 25.

## Nifty Intraday



## INDIAN MARKET

SENSEX	49,180	-1.77%
NIFTY	14,549	-1.82%
SGX Nifty*	14,573	0.09%

## GLOBAL INDICES

Dow Jones	32,420	-0.01%
Nasdaq	12,961	-2.04%
FTSE	6,712	0.19%
DAX	14,610	-0.35%
Straits Times	3,138	0.19%
Nikkei 225	28,709	1.06%
Hang Seng	27,961	0.15%

## COMMODITIES

Gold	44,862	0.48%
Silver	65,251	0.43%
Natural Gas	183	-0.11%
Crude Oil	4,453	4.94%

## CURRENCY

Dollar / Rupee	72.56	0.19%
Euro / Rupee	85.81	0.08%
Pound / Rupee	99.47	0.14%

## VOLUME RS. CRORE (CASH)

Cash BSE	3,605
Cash NSE	58,196

## FII ACTIVITIES RS. CR. NET

5577.51	7,529	-1951.90
---------	-------	----------

## DII ACTIVITIES RS. CR. NET

5581.34	4,969	612.80
---------	-------	--------

\*Sources - Bloomberg, Moneycontrol, Zeebusiness, Livemint

Nifty Outlook



MOVING AVERAGE

20 DEMA	14831
100 DEMA	13970
200 DEMA	12600

L1 L2 L3

R	14689	14828	14905
S	14473	14396	14257

- Nifty continued the downside move for the day after a negative opening. The benchmark index plunged more than 1.5% to close at 14561.85.
- All the sectoral indices came under pressure and settled in red with the average loss of 1.5% whereas Nifty Auto and Nifty Metal were the top losers.
- Despite a continued fall, a few stocks like Cipla, Asianpaints, Powergrid have contributed some gains and managed to close at a green note while Tatasteel, Tatamotors, M&M, Hindalco were the prime laggards.
- Technically, the index has formed a bearish candle after two days of recovery and settled near its immediate support of 14500 levels. On an hourly chart, the benchmark index has closed below 100 Exponential Moving Averages, which indicates selling pressure for the near term.
- At present, the nifty has an immediate support at 14500 levels while upside resistance is shifted up to 14800 levels. If the index sustains below the levels of 14500 then downsides could be seen till 14300 levels.

Bank Nifty Outlook



MOVING AVERAGE

20 DEMA	34711
100 DEMA	31868
200 DEMA	27724

L1 L2 L3

R	33763	34232	34507
S	33019	32744	32275

- Banknifty dragged more than 850 points in a day to close at 33293.25 levels
- Moreover, the stock has confirmed the “Bearish Marabozu Candlestick” which is bearish reversal pattern suggests a south worth movement in the counter.
- Moreover, the stock has been trading below its 21 Days Moving Average which is placed at 34711 level which shows negative momentum in the stock.
- At Present in the Index has support comes at 32900 level while resistance comes at 34000 level.

Symbols	Close	R3	R2	R1	P	S1	S2	S3	Trend	Action
ADANIPTS	708	824	772	740	719	687	666	613	Down	Sell
ASIANPAINT	2444	2561	2501	2473	2441	2413	2381	2321	Up	Buy
AXISBANK	709	756	734	722	712	700	691	669	Down	Sell
BAJAJ-AUTO	3606	3846	3739	3672	3632	3565	3525	3418	Down	Sell
BAJAJFINSV	9225	9660	9460	9343	9261	9143	9062	8862	Down	Sell
BAJFINANCE	5278	5532	5418	5348	5304	5234	5190	5076	Down	Sell
BHARTIARTL	522	550	538	530	526	518	514	502	Down	Sell
BPCL	431	448	440	435	432	427	424	416	Down	Sell
BRITANNIA	3536	3634	3588	3562	3542	3516	3496	3450	Down	Sell
CIPLA	791	840	814	802	787	776	761	735	Up	Buy
COALINDIA	133	139	136	134	133	131	130	127	Down	Sell
DIVISLAB	3482	3671	3583	3532	3495	3444	3407	3319	Down	Sell
DRREDDY	4343	4540	4452	4398	4364	4310	4277	4189	Down	Sell
EICHERMOT	2629	2810	2732	2681	2655	2603	2577	2500	Down	Sell
GAIL	131	139	135	133	132	129	128	124	Down	Sell
GRASIM	1388	1451	1421	1405	1392	1375	1363	1333	Down	Sell
HCLTECH	975	1013	994	984	975	965	956	937	Down	Sell
HDFC	2465	2585	2529	2497	2472	2440	2415	2358	Down	Sell
HDFCBANK	1481	1557	1522	1501	1486	1466	1451	1415	Down	Sell
HDFCLIFE	678	704	692	685	680	673	668	656	Down	Sell
HERMOTOCO	3033	3173	3110	3072	3047	3009	2984	2921	Down	Sell
HINDALCO	319	344	333	326	321	314	310	298	Down	Sell
HINDUNILVR	2320	2399	2364	2342	2329	2307	2293	2258	Down	Sell
ICICIBANK	569	603	587	578	572	563	556	540	Down	Sell
INDUSINDBK	961	1027	997	979	967	949	937	907	Down	Sell
INFY	1355	1406	1381	1368	1357	1344	1333	1309	Down	Sell
IOC	94	100	98	96	95	93	93	90	Down	Sell
ITC	216	233	226	221	218	213	211	203	Down	Sell
JSWSTEEL	439	461	450	444	438	433	426	415	Up	Buy
KOTAKBANK	1782	1850	1818	1800	1787	1769	1755	1723	Down	Sell
LT	1377	1475	1428	1402	1381	1355	1334	1287	Down	Sell
M&M	813	895	859	836	822	799	786	749	Down	Sell
MARUTI	7060	7306	7198	7129	7089	7021	6981	6873	Down	Sell
NESTLEIND	16436	17243	16892	16664	16542	16314	16191	15841	Down	Sell
NTPC	106	115	111	108	107	105	103	99	Down	Sell
ONGC	106	111	108	107	105	104	102	98	Up	Buy
POWERGRID	221	235	228	224	221	217	214	207	Up	Buy
RELIANCE	2049	2135	2096	2072	2056	2033	2017	1978	Down	Sell
SBILIFE	880	923	903	891	883	871	863	843	Down	Sell
SBIN	360	383	373	367	363	356	352	342	Down	Sell
SHREECEM	27840	29325	28654	28247	27984	27576	27313	26642	Down	Sell
SUNPHARMA	585	616	602	594	588	580	575	561	Down	Sell
TATAMOTORS	295	321	309	302	298	290	286	274	Down	Sell
TATASTEEL	706	781	747	726	713	692	679	645	Down	Sell
TCS	3124	3211	3170	3147	3129	3106	3088	3047	Down	Sell
TECHM	992	1050	1024	1008	998	982	972	945	Down	Sell
TITAN	1485	1555	1522	1504	1490	1471	1458	1425	Down	Sell
ULTRACEMCO	6840	7083	6979	6909	6875	6805	6771	6667	Down	Sell
UPL	611	677	647	629	618	600	589	559	Down	Sell
WIPRO	411	424	418	414	412	408	406	399	Down	Sell

### Research Team

**Mr. Sumeet Bagadia** : Executive Director

**Sachin Gupta**  
Sr. Research Associate

**Palak Kothari**  
Research Associate

**Diksha Mhatre**  
Research Advisor

**Vishal Singh**  
Research Advisor

#### Quick Order Placement

Trade with **JIFFY**



**Any kind of queries on RESEARCH,**  
contact us on: 022 - 67079933 / 971 / 978  
**Email:** contact@choiceindia.com  
**website:** www.choiceindia.com

Connect us



**Disclaimer:** This is solely for information of clients of Choice Broking and does not constitute to be an investment advice. It is also not intended as an offer or solicitation for the purchase and sale of any financial instruments. Any action taken by you on the basis of the information contained herein is your responsibility alone and Choice Broking its subsidiaries or its employees or associates will not be liable in any manner for the consequences of such action taken by you. We have exercised due diligence in checking the correctness and authenticity of the information contained in this recommendation, but Choice Broking or any of its subsidiaries or associates or employees shall not be in any way responsible for any loss or damage that may arise to any person from any inadvertent error in the information contained in this recommendation or any action taken on basis of this information. Technical analysis studies market psychology, price patterns and volume levels. It is used to forecast future price and market movements. Technical analysis is complementary to fundamental analysis and news sources. The recommendations issued herewith might be contrary to recommendations issued by Choice Broking in the company research undertaken as the recommendations stated in this report is derived purely from technical analysis. Choice Broking has based this document on information obtained from sources it believes to be reliable but which it has not independently verified; Choice Broking makes no guarantee, representation or warranty and accepts no responsibility or liability as to its accuracy or completeness. The opinions contained within the report are based upon publicly available information at the time of publication and are subject to change without notice. The information and any disclosures provided herein are in summary form and have been prepared for informational purposes. The recommendations and suggested price levels are intended purely for trading purposes. The recommendations are valid for the day of the report however trading trends and volumes might vary substantially on an intraday basis and the recommendations may be subject to change. The information and any disclosures provided herein may be considered confidential. Any use, distribution, modification, copying, forwarding or disclosure by any person is strictly prohibited. The information and any disclosures provided herein do not constitute a solicitation or offer to purchase or sell any security or other financial product or instrument. The current performance may be unaudited. Past performance does not guarantee future returns. There can be no assurance that investments will achieve any targeted rates of return, and there is no guarantee against the loss of your entire investment. **POTENTIAL CONFLICT OF INTEREST DISCLOSURE** (as on date of report) Disclosure of interest statement: • Analyst interest of the stock/instrument(s): - No. • Firm interest of the stock/instrument (s): - No.